

WORKING NEAR POWERLINES?



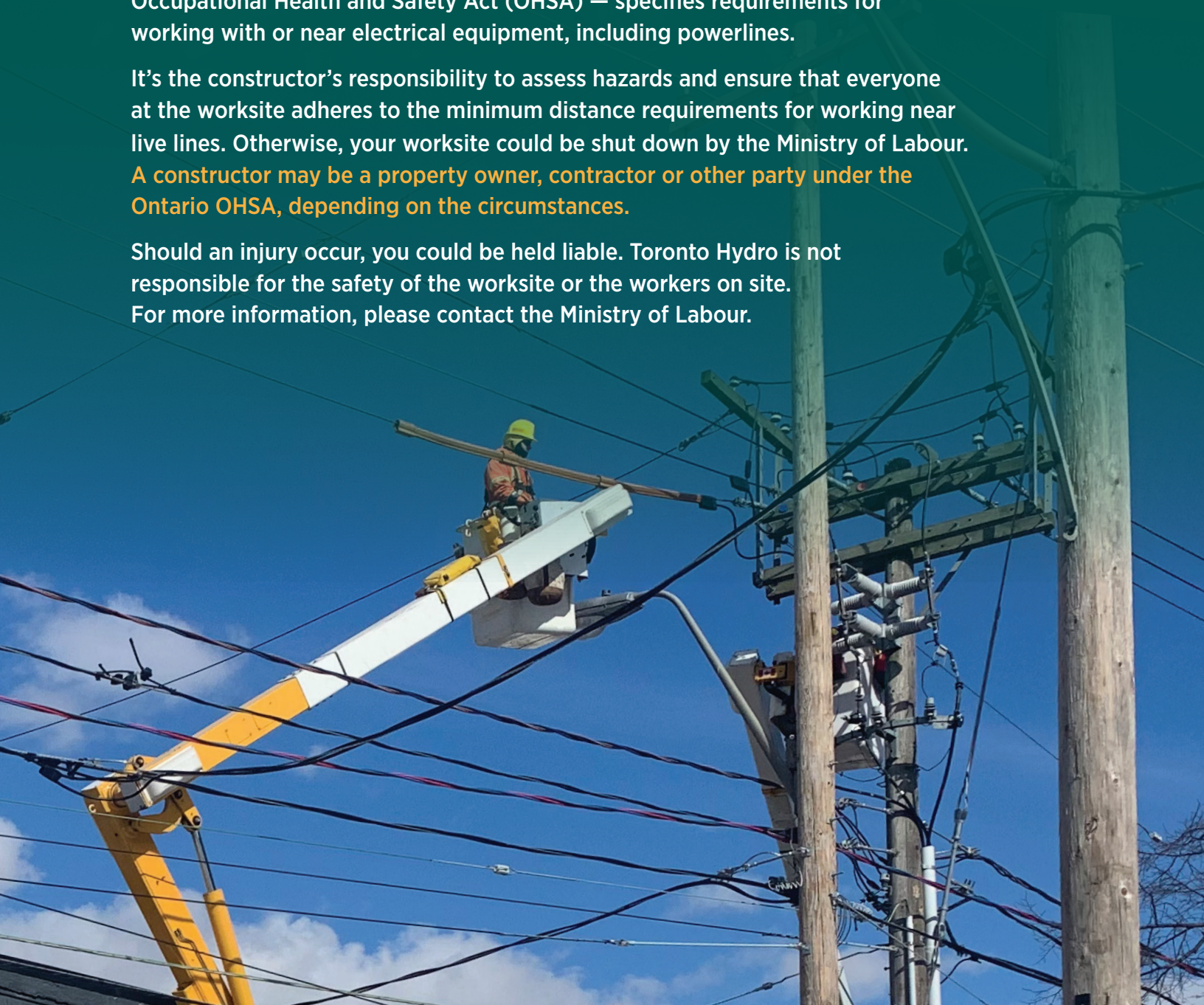
Make the area safe, it's the law.

Contact with a live powerline can cause severe injuries and, in some cases, death. It's in everyone's interest to follow the applicable safety codes. In fact, the Construction Projects Regulation (O. Reg. 213/91) — in the Ontario Occupational Health and Safety Act (OHSA) — specifies requirements for working with or near electrical equipment, including powerlines.

It's the constructor's responsibility to assess hazards and ensure that everyone at the worksite adheres to the minimum distance requirements for working near live lines. Otherwise, your worksite could be shut down by the Ministry of Labour.

A constructor may be a property owner, contractor or other party under the Ontario OHSA, depending on the circumstances.

Should an injury occur, you could be held liable. Toronto Hydro is not responsible for the safety of the worksite or the workers on site. For more information, please contact the Ministry of Labour.



WE'RE CONCERNED ABOUT YOUR SAFETY



Always think about potential electrical hazards.

If you're working near overhead powerlines

Call Toronto Hydro to have your powerlines isolated (power temporarily cut off) or relocated/removed. There's a fee for these services. Call ahead to get an estimate and details on the schedule for installation or other work.

Please note that work may be performed by an authorized contractor of Toronto Hydro.

IMPORTANT NOTE: TORONTO HYDRO DOES NOT REQUIRE THE USE OF LINE COVERS. Covered lines draw attention to the dangers of live powerlines but don't protect against contact hazards. All live powerlines, covered or uncovered, are a significant safety hazard and should be avoided. The Construction Projects Regulation (O. Reg. 213/91) made under the Ontario OHS Act requires that people and equipment keep a minimum distance of 3 metres from high voltage powerlines (between 750 volts and 150,000 volts). **All lines must be treated as high voltage until Toronto Hydro has identified the voltage.**

Take care with all lines

Contact with any powerline could cause severe injury or death. Overhead powerlines have the potential to deliver more energy than wires in your building or home, meaning they're more hazardous. That's why it's important to take proper precautions to protect workers and stay within the law.

Survey your worksite well in advance

Before you start any construction project, review the job with your contractors, pointing out the location of all overhead and underground powerlines within or near the work area.

If you perform work without a contractor, contact the Electrical Safety Authority regarding required permits and relevant regulations.

Keep equipment away

Ensure that the requirements of Construction Projects Regulation (O. Reg. 213/91) Section 188 are adhered to when working near power lines.

Tools, ladders, scaffolds and other equipment/materials capable of conducting electricity must not be stored or used close to energized electrical equipment, installations or conductors. Pay special attention to lines that may be crossing roads or other pathways for equipment and vehicles.

A signal person must be available

A signal person must be on hand to assist the operator whenever equipment — like a crane or similar hoisting device, backhoe, power shovel or vehicle — is near overhead power lines.

Devices and signs must be posted

Several steps must be taken to inform equipment operators of electrical hazards, including:

- Written notice of electrical hazards must be provided to equipment operators before work starts
- Adequate warning devices, visible to the equipment operator, must be positioned in the vicinity of the hazard
- Warning signs, visible to the operator, must be posted at the operator's station

If you come in contact with a powerline

- Remain in/on the equipment. Stepping out/off creates a path to the ground, which could be fatal
- Keep others away. Don't touch the victim or the equipment while still in contact with energized power lines. Even walking close to the energized area could be fatal
- Call 911 immediately

For more information on powerline safety:

Call **416-542-8000**

Visit **torontohydro.com/powerlinesafety**

